



Eligibility Criteria

Participation: At least 3 independent organizations in 3 different countries. (At least 2 organizations from 2 different Member States / Associated Countries)

If all in Member States / Associated Countries: at least 1 academic and 1 non-academic.

Nationality: Any.

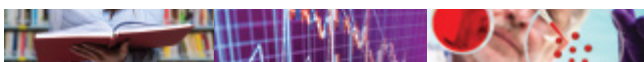
Staff members must have been actively engaged in or linked to research/innovation activities at sending institution for at least 6 months prior to first secondment.



Funding (per month)

| | | |
|------------------------|---|---------|
| Staff member unit cost | Top-up allowance* | 2,000 € |
| Institutional | Research, training and networking costs | 1,800 € |
| | Management and indirect costs | 700 € |

*Participants continue paying the salary of seconded staff during exchange and allowance. Top up is intended for travel, accommodation and subsistence.



Important documents

- ☒ This brochure - Tips and Tricks
- ☐ Work Programme
- ☐ Guide for Applicants (GfA)
- ☐ EC Web streaming sessions
- ☐ European Charter for Researchers
- ☐ Code of Conduct for the Recruitment of Researchers



About Net4Mobility

Net4Mobility is a transnational cooperation project between the National Contact Points (NCPs) of the EU Marie Skłodowska-Curie Actions (MSCA).

The project aims to help NCPs improve the service provided to interested parties all over the world, and increase awareness of the MSCA funding possibilities.

Among our Services

- Explain relevant possibilities
- Help find the best option for you
- Assistance throughout the whole process

WE ARE HERE FOR YOU!

Find YOUR NCP and explore your possibilities

www.net4mobility.eu



GOETMAN



This project has received funding from the EU Horizon 2020 Research and Innovation programme under the Marie Skłodowska-Curie actions

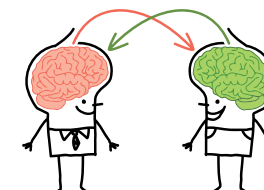
Marie Skłodowska-Curie Actions (MSCA)



Research and Innovation Staff Exchange (RISE)

RISE supports mobility of researchers, technical, administrative and managerial staff of all nationalities and at all career levels. It is open to partnerships of universities, research institutions and non-academic organisations both within and beyond Europe.

- An action that helps you develop sustainable collaborative projects.
- Exchange of best practice across borders and sectors.
- It's for managerial, administrative and technical staff as well.



- Who?** Academic institutions and non-academic organizations
- What?** 100% funding for up to 4 years
- Where?** Europe and Third countries
- When?** Call deadline every year!

Tips & Tricks for writing a good RISE proposal

General

Use the structure provided in the template and address all the evaluation criteria.

Have your proposal proof-read by a colleague and pre-screened by your NCP.

Excellence

Impact

Implementation

Make sure all of the international, inter/multidisciplinary and cross-sectoral aspects of the project are evident.

Intellectual Property Right issues tend to be neglected. A credible strategy for managing IP can help you get extra points.

Project deliverables and milestones should be clearly presented.

